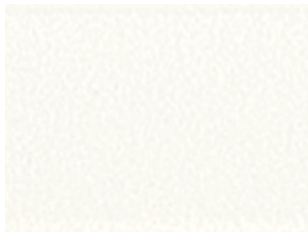


BN | LACQUERED METAL FINISHES 2



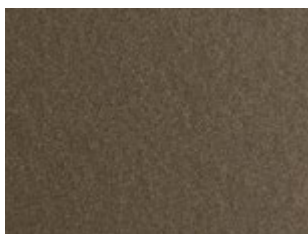
M306 Bianco | White | Blanc | Weiß |
Blanco | Белый



M097 Grigio chiaro | Light grey | Gris clair |
Hell grau | Gris claro | Светло-серый



M312 Sabbia | Sand | Sable | Sand | Arena |
Песочный



M028 Ottone scuro | Dark brass |
Laiton foncé | Dunkelmessing |
Тёмная латунь



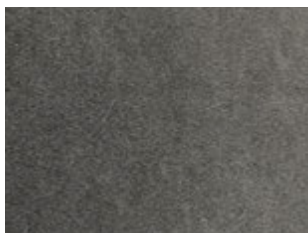
M307 Testa di moro | Dark brown |
Marron foncé | Dunkelbraun |
Marrón | Тёмно-коричневый



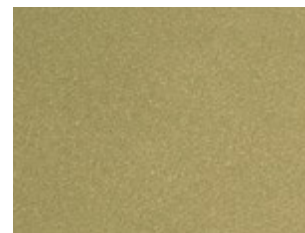
M310 Antracite | Anthracite | Anthracite |
Anthrazit | Antracita | Антрацит



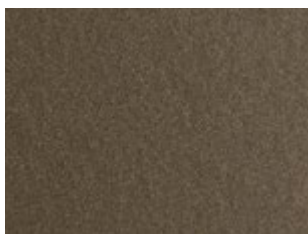
M055 Nero | Black | Noir | Schwarz |
Negro | Черный



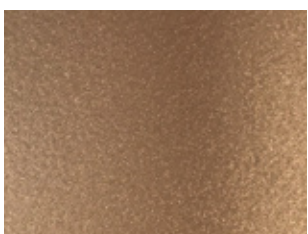
M326 Argento naturale |
Natural silver | Argent |
Silber natur | Plata natural |
Натуральное серебро



M325 Oro | Gold | Or | Gold | Oro | Золото



M028 Ottone scuro | Dark brass |
Laiton foncé | Dunkelmessing |
Тёмная латунь



M329 Oro rosa | Rose gold | Or rosé |
Rosegold | Ora rosa |



M327 Nero profondo lucido | Glossy black
Noir brillant | Hochglänzend schwarz
Negro brillo | Глубокий черный
глянцевый