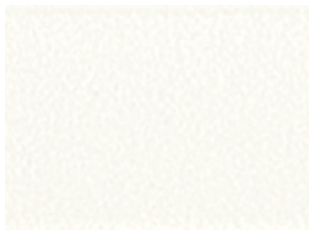
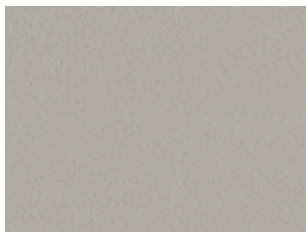


# BN | LACQUERED METAL FINISHES 1

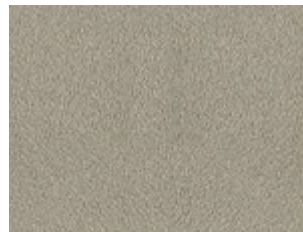
---



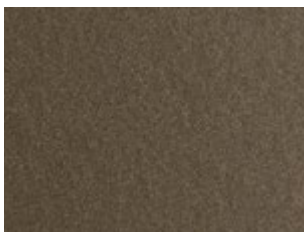
**M306** Bianco | White | Blanc | Weiß |  
Blanco | Белый



**M097** Grigio chiaro | Light grey | Gris clair |  
Hell grau | Gris claro | Светло-серый



**M312** Sabbia | Sand | Sable | Sand | Arena |  
Песочный



**M028** Ottone scuro | Dark brass |  
Laiton foncé | Dunkelmessing |  
Тёмная латунь



**M307** Testa di moro | Dark brown |  
Marron foncé | Dunkelbraun |  
Marrón | Темно-коричневый



**M310** Antracite | Anthracite | Anthracite |  
Anthrazit | Antracita | Антрацит



**M055** Nero | Black | Noir | Schwarz |  
Negro | Черный