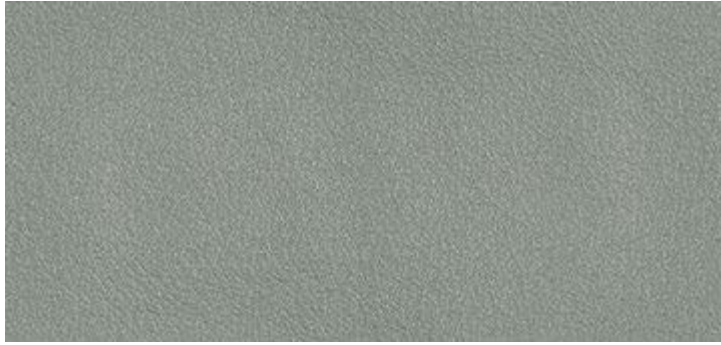


PREMIUM NAPPA LEATHER



PR06 Verde chiaro | Light green | Vert clair | Hell grün | Verde claro | Светло-Зеленый



PR01 Bianco | White | Blanc | Weiß | Blanco | Белый

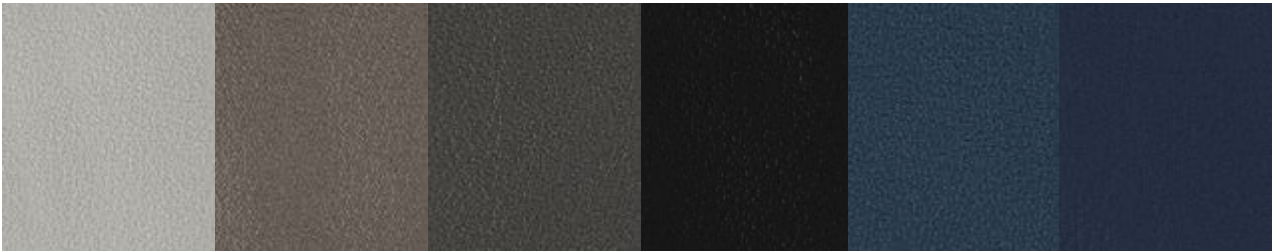
PR02 Avorio | Ivory | Ivoire | Elfenbein | Marfil | Слоновая Кость

PR03 Beige | Beige | Beige | Beige | Бежевый

PR04 Sabbia | Sand | Sable | Sand | Arena | Песочный

PR05 Grigio chiaro | Light grey | Gris clair | Hell grau | Gris claro | Светло-Серый

PR07 Cipria | Old rose | Vieux rose | Alte rose | Rojo viejo | Пудра



PR08 Ghiaccio | Ice | Glace | Eis | Hielo | Лед

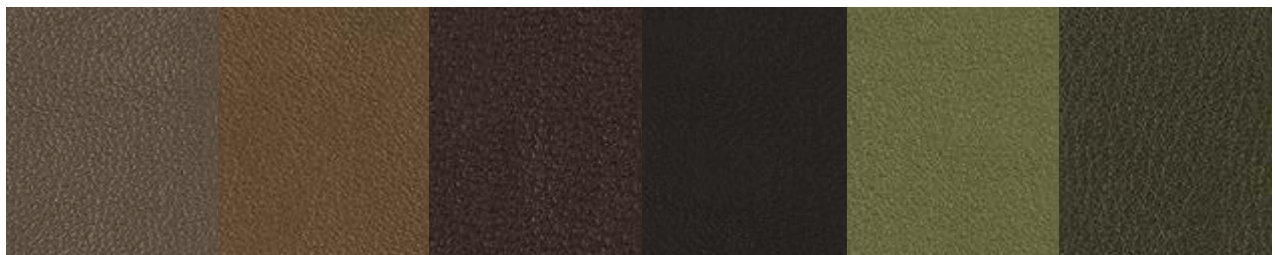
PR09 Talpa | Grey | Gris | Grau | Gris | Серовато-Коричневый

PR10 Antracite | Anthracite | Anthracite | Anthrazit | Antracita | Антрацит

PR11 Nero | Black | Noir | Schwarz | Negro | Черный

PR12 Avio | Air Force blue | Air Force bleu | Air Force blau | Azul RAF | Голубой авиационный

PR13 Blu | Blue | Bleu | Blau | Azul | Синий



PR14 Fango | Mud | Vase | Schlamm | Barro | Серо-Бежевый

PR15 Nocciola | Hazelnut | Noisette | Haselnuß | Avellana | Орех

PR16 Cioccolato | Chocolate | Chocolat | Schokolade | Chocolate | Шоколад

PR17 Testa di moro | Dark brown | Marrón foncé | Dunkelbraun | Marrón oscuro | Темно-коричневый

PR18 Verde oliva | Olive green | Vert olive | Olivgrün | Verde oliva | Зеленый оливковый

PR19 Verdone | Dark green | Vert foncé | Dunkelgrün | Verde oscuro | Темно-зеленый



PR20 Giallo | Yellow | Jaune | Gelb | Amarillo | Желтый

PR21 Rosso | Red | Rouge | Rot | Rojo | Красный

PR22 Rosso antico | Oxide Red | Rouge oxyde | Oxide Rot | Rojo óxido | Красный античный

PR24 Amaranto | Amaranth | Amarante foncé | Amarant | Amaranto | Амарант

PR23 Rosa antico | Dark pink | Rouge foncé | Dunkelrose | Rosa antiguo | Состаренная роза

ECO LEATHER



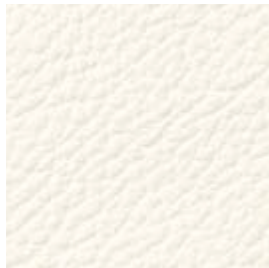
TR521 Verde chiaro | Light green | Vert clair | Hell Grün | Verde claro | Светло-зелёный



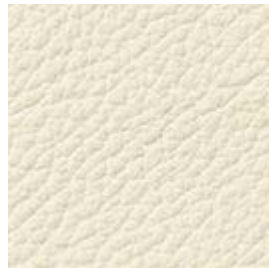
TR518 Sabbia | Sand | Sable | Sand | Arena | Песочный



TR523 Nocciola | Hazelnut | Noisette | Haselnuß | Avellana | Орех



TR505 Bianco | White | Blanc | Weiß | Blanco | Белый



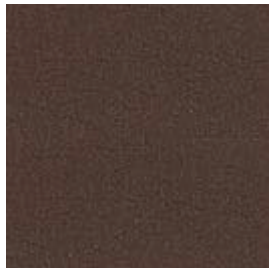
TR500 Avorio | Ivory | Ivoire | Elfenbeinfarbe | Marfil | Слоновая кость



TR501 Beige | Beige | Beige | Beige | Beige | беж



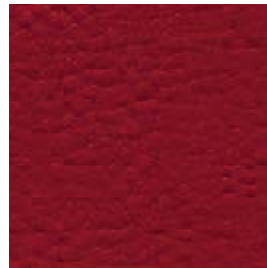
TR519 Fango | Mud | Vase | Schlammfarbig | Barro | Серо-коричневый



TR510 Marrone | Brown | Marron | Braun | Marrón | Коричневый



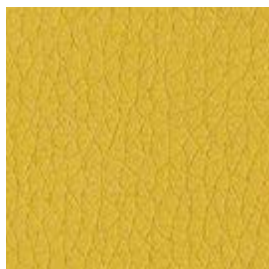
TR503 Testa di moro | Dark brown | Marron foncé | Dunkelbraun | Marrón oscuro | Темно-коричневый



TR502 Rosso | Red | Rouge | Rot | Rojo | Красный



TR509 Bordeaux | Bordeaux | Bordeaux | Bordeaux | Bordeaux | Бордо



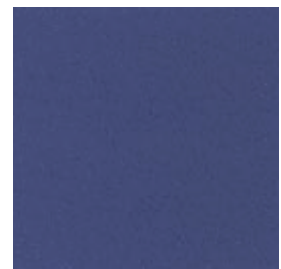
TR525 Giallo | Yellow | Jaune | Gelb | Amarillo | Жёлтый



TR522 Cipria | Old Rose | Vieux Rose | Alte Rose | Rojo Viejo | Пудра



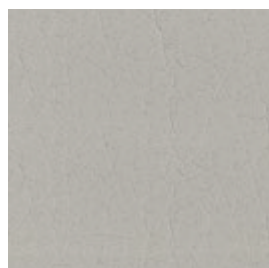
TR524 Verdone | Dark green | Vert foncé | Dunkelgrün | Verde oscuro | Тёмно-зелёный



TR514 Blu | Blue | Bleu | Blau | Azul | Синий



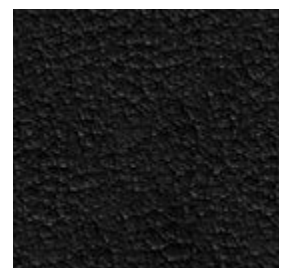
TR515 Blu cobalto | Cobalt blue | Bleu cobalt | Kobaltblau | Azul cobalto | Синий кобальт



TR516 Grigio chiaro | Light grey | Gris clair | Hell grau | Gris claro | Светло-серый



TR517 Antracite | Anthracite | Anthracite | Anthrazit | Antracita | Антрацит

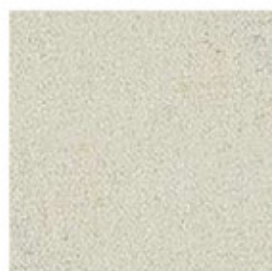


TR504 Nero | Black | Noir | Schwarz | Negro | Черный

WATERPROOF NUBUCK LEATHER



TN006 Blu Bondi | Blue Bondi | Bondi Bleu | Blau Bondi | Azul Bondi | Темная ночь



TN001 Bianco | White | Blanc | Weiß | Blanco | Белый



TN002 Sabbia | Sand | Sable | Sand | Arena | Песочный



TN010 Biscotto | Biscuit | Biscuit | Biskuit | Biscocho | Бисквитный



TN003 Tortora | Dove grey | Gris tourterelle | Taubengrau | Gris ceniciento | Серо-бежевый



TN004 Visone | Mink | Vison | Nerz | Vison | Норка



TN009 Testa di moro | Dark brown | Marron foncé | Dunkelbraun | Marrón oscuro | Темно-коричневый



TN008 Bordeaux | Bordeaux | Bordeaux | Bordeaux | Bordeaux Rot | Burdeos | Бордо

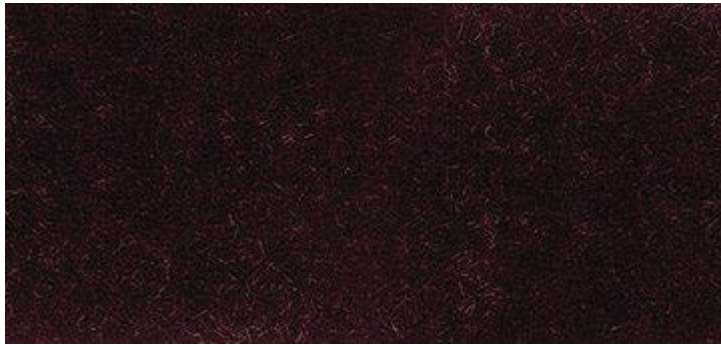


TN005 Cielo | Light blue | Bleu clair | Hell blau | Celeste | Небо



TN007 Antracite | Anthracite | Anthracite | Anthrazit | Antracita | Антрацит

VELVET



TVE04 Rosso vino | Wine red | Vin rouge | Weinrot | Rojo vino | Красное вино



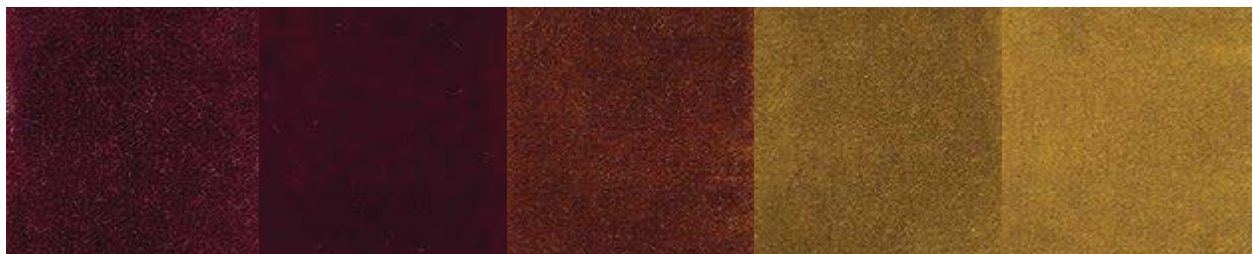
TVE01 Latte | Milk | Lait | Milch | Leche | Молоко

TVE13 Cipria | Old rose | Vieux rose | Alte rose | Rojo viejo | Пудра

TVE02 Tortora | Dove grey | Tourterelle | Taubengrau | Gris ceniciento | Серо-бежевый

TVE16 Testa di moro | Dark brown | Marron foncé | Dunkelbraun | Marrón oscuro | Темно-коричневый

TVE03 Prugna | Prune | Prune | Pflaume | Ciruela | Слива



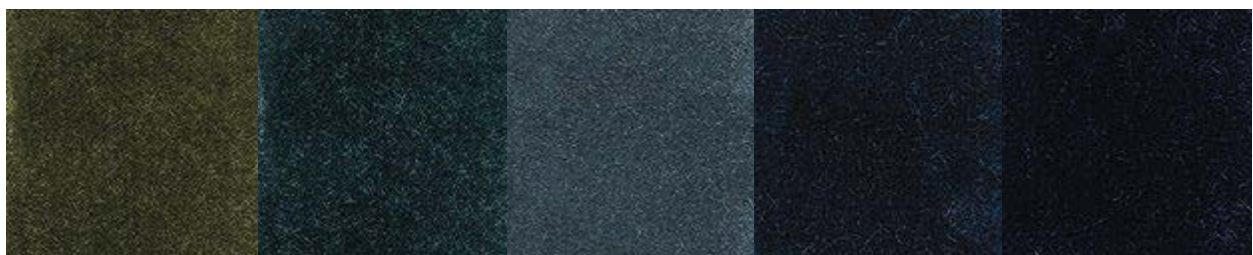
TVE18 Rosso porpora | Purple red | Rouge pourpre | Purpurrot | Rojo purpura | Пурпурно-красный

TVE05 Rosso rubino | Ruby red | Rouge rubis | Rubinrot | Rojo rubí | Rubиново-красный

TVE06 Terracotta | Terracotta | Terre cuite | Terrakotta | Terrakota | Терракота

TVE07 Senape | Mustard | Moutarde | Senffarbe | Mostaza | Горчица

TVE08 Giallo | Yellow | Jaune | Gelb | Amarillo | Желтый



TVE20 Verdone | Dark reen | Vert foncé | Dunkelgrün | Verde oscuro | Темно-зеленый

TVE09 Verde smeraldo | Emerald green | Vert émeraude | Smaragdgrün | Verde esmeralda | Зеленый изумруд

TVE10 Petrolio | Petroleum | Pétrole | Ölfarbe | Petróleo | Нефть

TVE11 Blu pavone | Peacock blue | Bleu paon | Pfau blau | Azul pavo real | Синий павлин

TVE12 Blu notte | Night blue | Bleu nuit | Nachtblau | Azul noche | Темно-синий



TVE19 Celeste | Light blue | Bleu ciel | Himmelblau | Celeste | Лазурный

TVE14 Grigio chiaro | Light grey | Gris clair | Hell grau | Gris claro | Светло-серый

TVE15 Antracite | Anthracite | Anthracite | Anthrazit | Antracita | Антрацит

TVE17 Nero | Black | Noir | Schwarz | Negro | Черный

PURE VIRGIN WOOL



TL010 Polvere | Powder | Poudre | Puder | Gris polvo | Пыль



TL001 Naturale | Natural | Natural | Natürlich | Natural | Натуральный



TL002 Sabbia | Sand | Sable | Sand | Arena | Песочный



TL011 Melone | Melon yellow | Jaune melon | Melonengelb | Amarillo melón | Дыня



TL003 Testa di moro | Dark brown | Marron foncé | Dunkelbraun | Marrón oscuro | Темно-коричневый



TL004 Verde bosco | Forest green | Vert forêt | Laubgrün | Verde | Лесная зелень



TL012 Acquamarina | Aquamarine | Aigue-marine | Aquamarin | Aguamarina | Аквамарин



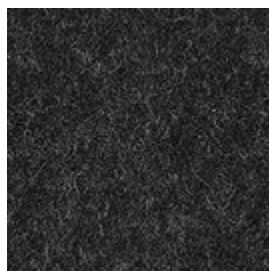
TL006 Cielo | Light blue | Bleu clair | Hell blau | Celeste | Небо



TL013 Blu navy | Navy blue | Bleu marine | Nachtblau | Azul navy | Темно-синий



TL008 Grigio chiaro | Light grey | Gris clair | Hell grau | Gris claro | Светло-серый



TL009 Antracite | Anthracite | Anthracite | Anthrazit | Antracita | Антрацит

LULÚ FABRIC



TLU09 Petrolio | Petroleum | Pétrole | Ólfarbe | Petróleo | Нефть



TLU01 Ghiaccio | Ice | Glace | Eis | Hielo | Лед



TLU02 Tortora | Dove grey | Tourterelle | Taubengrau | Gris ceniciento | Серо-бежевый



TLU04 Testa di moro | Dark brown | Marron foncé | Dunkelbraun | Marrón oscuro | Темно-коричневый



TLU03 Sale & pepe | Salt & pepper | Sel & poivre | Salz & Pfeffer | Sal & pimienta | Соль и перец



TLU05 Senape | Mustard | Moutarde | Senffarbe | Mostaza | Горчица



TLU06 Arancio viola | Orange violet | Orange pourpre | Orange violett | Naranja violeta | Оранжево-фиолетовый

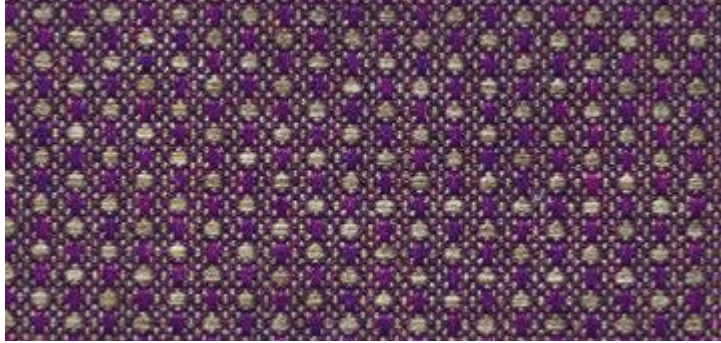


TLU07 Viola grigio | Violet grey | Gris violet | Violett grau | Violeta gris | Фиолетово-серый



TLU08 Azzurro polvere | Powder blue | Bleu pastel | Taubenblau | Azul polvo | Синий порошок

MAMBO FABRIC



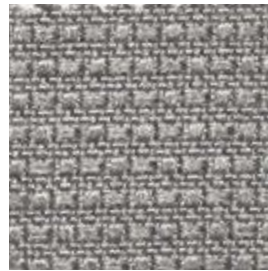
TMA07 Viola oro | Violet gold | Violet or | Violet gold | Violeta oro | Фиолетово-золотой



TMA01 Bianco | White | Blanc | Weiß | Blanco | Белый



TMA02 Ghiaccio | Ice | Glace | Eis | Hielo | Лед



TMA03 Grigio chiaro | Light grey | Gris clair | Hell grau | Gris claro | Светло-серый



TMA04 Tortora | Dove grey | Tourterelle | Taubengrau | Gris ceniciento | Серо-бежевый



TMA05 Senape | Mustard | Moutarde | Senffarbe | Mostaza | Горчица



TMA06 Corallo oro | Coral gold | Corail or | Koralle gold | Coral oro | Кораллово-золотой



TMA11 Nero oro | Black gold | Noir or | Schwarz gold | Negro oro | Черно-золотой



TMA10 Testa di moro | Dark brown | Marron foncé | Dunkelbraun | Marrón oscuro | Темно-коричневый



TMA08 Turchese | Turquoise | Turquoise | Türkis | Turquesa | Бирюза



TMA09 Blu di Prussia | Prussian blue | Bleu de Prusse | Preußisch blau | Azul de Prusia | Прусский синий



TMA12 Antracite | Anthracite | Anthracite | Anthrazit | Antracita | Антрацит