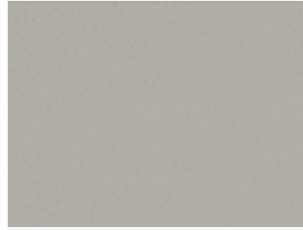
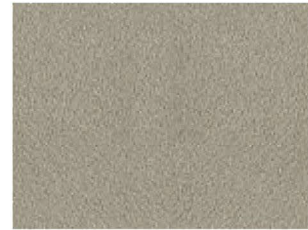


BN9 | LACQUERED METAL FINISHES



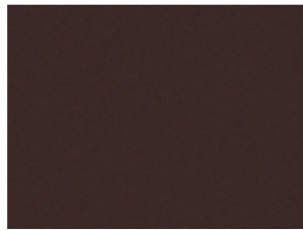
M097 Grigio chiaro | Light grey | Gris clair | Hell grau | Gris claro | Светло-серый



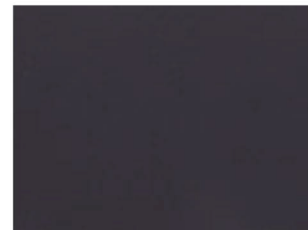
M312 Sabbia | Sand | Sable | Sand | Arena | Песочный



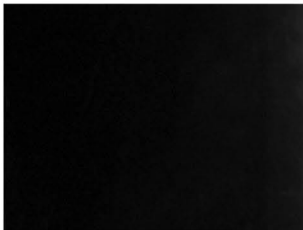
M028 Ottone scuro | Dark brass | Laiton foncé | Dunkelmessing | Тёмная латунь



M307 Testa di moro | Dark brown | Marron foncé | Dunkelbraun | Marrón | Темно-коричневый



M310 Antracite | Anthracite | Anthracite | Anthrazit | Antracita | Антрацит



M327 Nero profondo lucido | Glossy black | Noir brillant | Hochglänzend schwarz | Negro brillo | Глубокий черный глянец



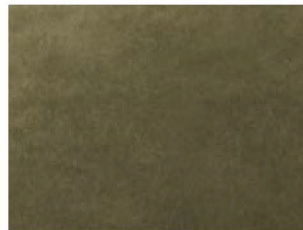
M089 Alluminio | Aluminium | Aluminium | Aluminium | Aluminio | Алюминий



M326 Argento naturale | Natural silver | Argent | Silber natur | Plata natural | Натуральное серебро



M325 Oro | Gold | Or | Gold | Oro | Золото



M328 Ottone anticato | Aged brass | Laiton vieilli | Altmessing | Latón envejecido | Состаренная латунь