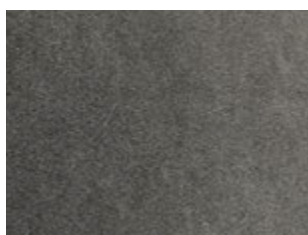
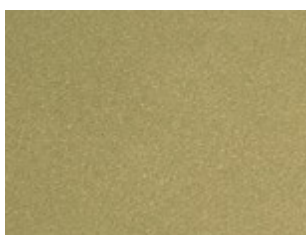


# LACQUERED METAL FINISHES

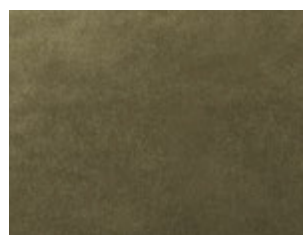
---



**M326** Argento naturale |  
Natural silver | Argent |  
Silber natur | Plata natural |  
Натуральное серебро



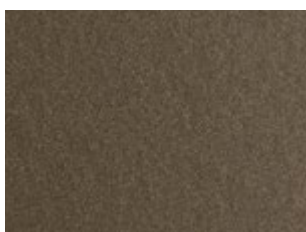
**M325** Oro | Gold | Or | Gold | Oro | Золото



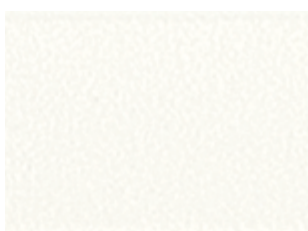
**M328** Ottone anticato | Aged brass |  
Laiton vielli | Altmessing |  
Latón envejecido |  
Состаренная латунь



**M327** Nero profondo lucido | Glossy black |  
Noir brillant | Hochglänzend schwarz |  
Negro brillo | Глубокий черный  
гляцевый



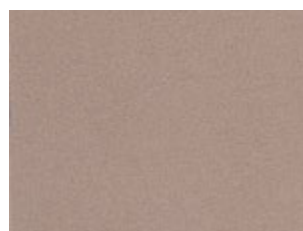
**M028** Ottone scuro | Dark brass |  
Laiton foncé | Dunkelmessing |  
Тёмная латунь



**M306** Bianco | White | Blanc | Weiß |  
Blanco | Белый



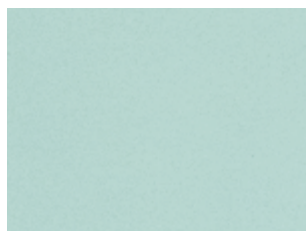
**M312** Sabbia | Sand | Sable | Sand | Arena |  
Песочный



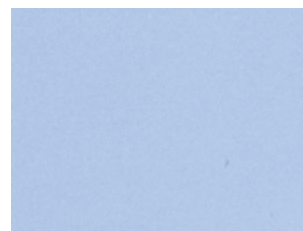
**M317** Cipria | Old rose | Vieux rose |  
Alte rose | Rojo viejo | Пудра



**M314** Giallo | Yellow | Jaune | Gelb |  
Amarillo | Желтый



**M319** Verde chiaro | Light green | Vert clair |  
Hell grün | Verde claro |  
Светло-зеленый



**M318** Celeste | Light blue | Bleu clair |  
Hell blau | Celeste | Лазурный



**M316** Blu | Blue | Bleu | Blau | Azul |  
Синий



**M315** Rosso | Red | Rouge | Rot | Rojo |  
Красный



**M307** Testa di moro | Dark brown |  
Marron foncé | Dunkelbraun |  
Marrón | Темно-коричневый



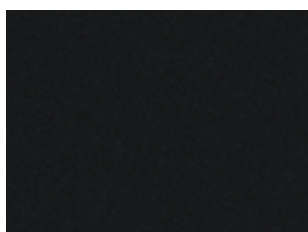
**M097** Grigio chiaro | Light grey | Gris clair |  
Hell grau | Gris claro | Светло-серый



**M089** Alluminio | Aluminium | Aluminium |  
Aluminium | Alumínio | Алюминий



**M310** Antracite | Anthracite | Anthracite |  
Anthrazit | Antracita | Антрацит



**M055** Nero | Black | Noir | Schwarz |  
Negro | Черный